

# Extra tall approach light masts

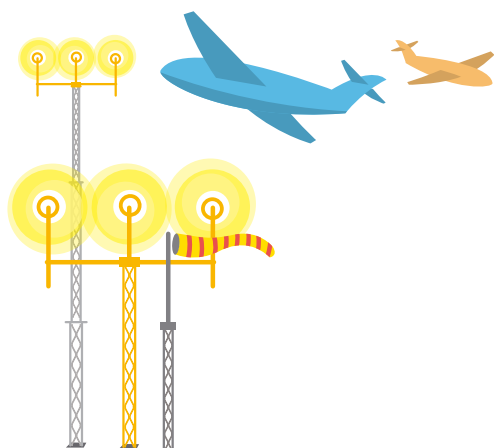
All Lattix Systems mast systems for the extra tall support systems comply to the latest ICAO frangibility requirements. ICAO require the top 12m solution to be frangible. Lattix Systems has delivered over 40m solutions.

All Lattix masts are rigidly full scale crash tested to withstand the forces of wind and extreme weather, and of course the jet blast that might occur on an airfield.

In addition, the Lattix® masts are fully frangible and will give way and absorb any force upon impact, leaving the airplane wing/body as little damaged as possible.

The extra tall Lattix systems are specially adapted according to the requirements in ICAO and frangible sections. Also, the dynamics and engineering knowledge is transformed for easy access.

Systems available up to approx. 40m.



# Lattix Systems has delivered frangible mast systems to more than 200 airports in 40 countries.



Approach light systems



Meteorological and weather station systems



Wind cone mast systems



Surveillance mast systems



Localizer support systems



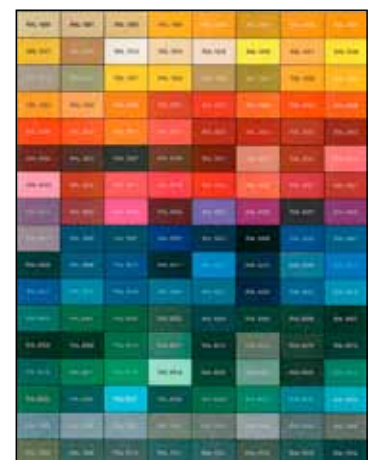
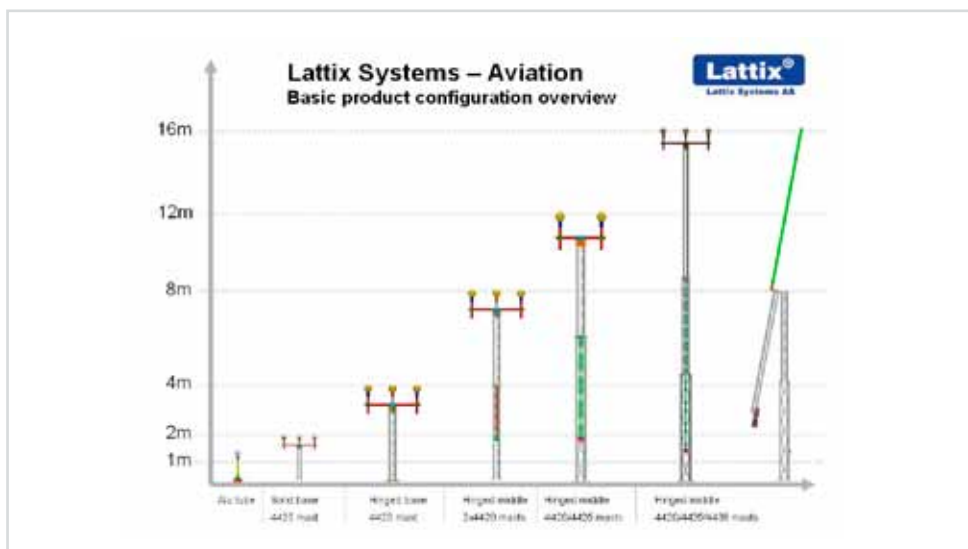
Glidepath mast systems



Floodlight systems



Extra tall masts



Lattix® masts can be powder coated according to all RAL colors.